

PRESS INFORMATION

Status: 19.08.2020
Page 1/4

Modular automation concept

Intelligent interaction of material, machine and automation

Freilassing, 19.08.2022. Increasingly shorter product life cycles, a shortage of skilled workers and the trend towards individualization require flexible automation solutions tailored to customer requirements. The answer to this is the new Kiefel Speed Automation (KSA) from Kiefel, which is based on a modular system. In addition to customer-specific automation solutions, with the KSA the company offers completely modular and therefore flexible standard automation for the KMD series, especially for the SPEEDFORMER KMD 78.2 Speed. The company is presenting the solutions this year at K 2022 in **Hall 3, Stand E90**.

The KSA is optimally matched to the KMD series and can be integrated into existing systems as well as into new machines. This allows the production of packaging with various modules to be automated and modernized. A KSA module forms stacks from partial stacks, e.g. of food trays. Another module is the carton erecting and closing unit. It removes cartons from a box magazine, erects them, and, if necessary, inserts a protective bag for hygienic packaging of the products. The stacked packaging is automatically inserted into these. As soon as the carton is full, the bag and carton can also be automatically closed and transported onwards as required. The KSA range also includes an automatic labeling unit.

The palletizing unit consists of two palletizing stations. This makes it possible to palletize in one station while the other is being emptied. If the products are not to be packed in cartons, the sleeving module can be used. Here, one or more stacks are packed and shrink-wrapped.

Easy integration of the KSA in the KMD series

This means that intelligent, modular automation solutions are available for the most common applications, which contain fewer product-specific format parts and can still be optimally adapted to customer requirements. This offers high product design flexibility. The tool layout has little or no impact on automation and the footprint of the KSA is minimal. The smooth integration of the KSA modules into the KMD machines means that the additional costs that usually arise with retrofitting are avoided. The standard KSA solution from Kiefel is designed for the fast cycle times of the KMD machines. Another bonus: The KSA makes it possible for just one person to operate the machine.

PRESS INFORMATION

Some of the automation modules can also be integrated into the SPEEDFORMER KTR series tilting machines.

Sustainable packaging with the KMD 78.2 Speed

At the K 2022 in Düsseldorf, in **Hall 3, Stand E90** Kiefel's packaging specialists will be demonstrating a SPEEDFORMER KMD 78.2 Speed producing a tray made from an rPET film with a thickness of 0.35 mm - light, stable and sustainable. The steel rule machine is just as at home in large series production as it is with smaller quantities. The machine's highlights include high productivity and process control, as well as intuitive user guidance.

The interaction of servo motor drives, the optimized symmetrical toggle lever system and particularly robust cast steel tables ensure high efficiency along the entire service life. The KISS-CUT system guarantees maximum machine uptime and precision with its high punching quality and reliability.

The separately driven plug assist provide material savings, high levels of process control and outstanding product quality. During machine development, the focus was on energy efficiency, for example of the heating elements or the drives, which all have an energy recovery system.

The new KMD generation not only saves energy, but film too. The film feed table with rollers prevents scratches and und particle contamination and ensures reliable and safe film transport. The forming surface of the machines makes optimum use of the film width. The servo motor-driven components, the high forming air speed and the cutting force ensure speed and accuracy. Ergonomic tool changing systems make tool changes quick and easy.

Machine operation made easy

Operation of the machines can be grasped quickly - thanks to the machine visualization, the human-machine interface (HMI). The production process is clearly visualized on a dashboard on a screen attached to the machine - machine operators can thus monitor the machine status and forming process at a glance. Settings, adjustments and test runs are carried out intuitively via the HMI. Supported by clear diagrams and animations as well as step-by-step instructions, machine training time and adjustment processes are reduced to a minimum. Kiefel received the Red Dot Award in the Brands & Communication Design category in 2020 for this.

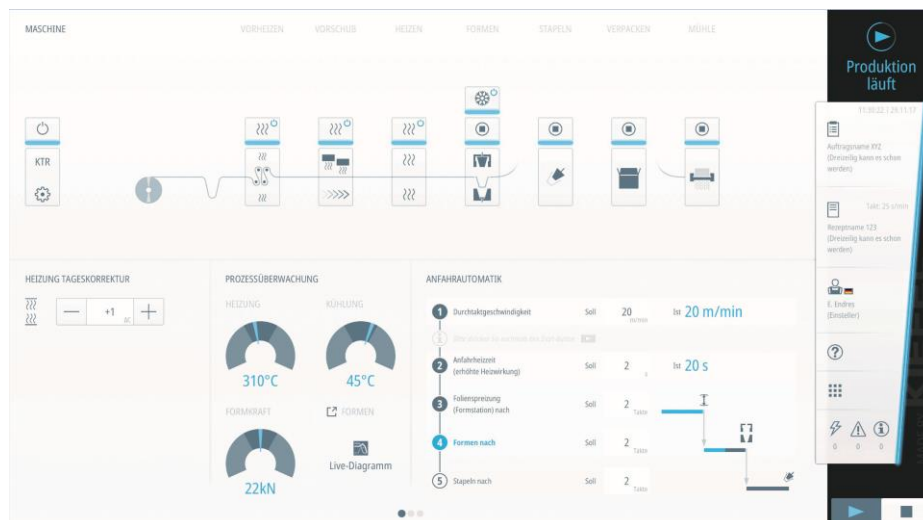
PRESS INFORMATION



The KMD 78.2 steel rule machine will be demonstrated live at the K trade fair. © KIEFEL GmbH



KSA modules, such as the bag inserter or carton sealer shown here, can be connected to existing and new KMD machines. © KIEFEL GmbH



Settings, adjustments and test runs are carried out intuitively via the new HMI. © KIEFEL GmbH

PRESS INFORMATION

About KIEFEL GmbH

KIEFEL GmbH develops and produces high quality machines for processing plastics, recycled and bio-based materials and natural fibers. Kiefel's customers include well-known manufacturers from the medical & pharmaceutical engineering, refrigerator and packaging industries. With its own technology and material centers, the company offers turnkey solutions and provides support in partnership from product development through machines and tools to service.

Kiefel has a global presence thanks to our own sales and service teams in the USA, France, the Netherlands, Russia, China, and India, as well as our sales and service partners in more than 60 countries.

Kiefel owns the Dutch thermoform toolmaker Kiefel Packaging BV, as well as the Austrian company KIEFEL Packaging GmbH, a supplier of tools and automation solutions.

Kiefel and its subsidiaries employ around 900 staff. KIEFEL GmbH is a member of the Brückner group, based in Siegsdorf, which is a family owned group of medium-sized enterprises active in machinery and plant engineering with around 2,600 employees at 23 different locations worldwide.

Kiefel Press Contact:

Janna Dautel
KIEFEL GmbH
Sudetenstraße 3
83395 Freilassing
Germany

T +49 8654 78 – 911
communications@kiefel.com
www.kiefel.com

Follow us:



[Website News](#)



[LinkedIn](#)



[YouTube](#)